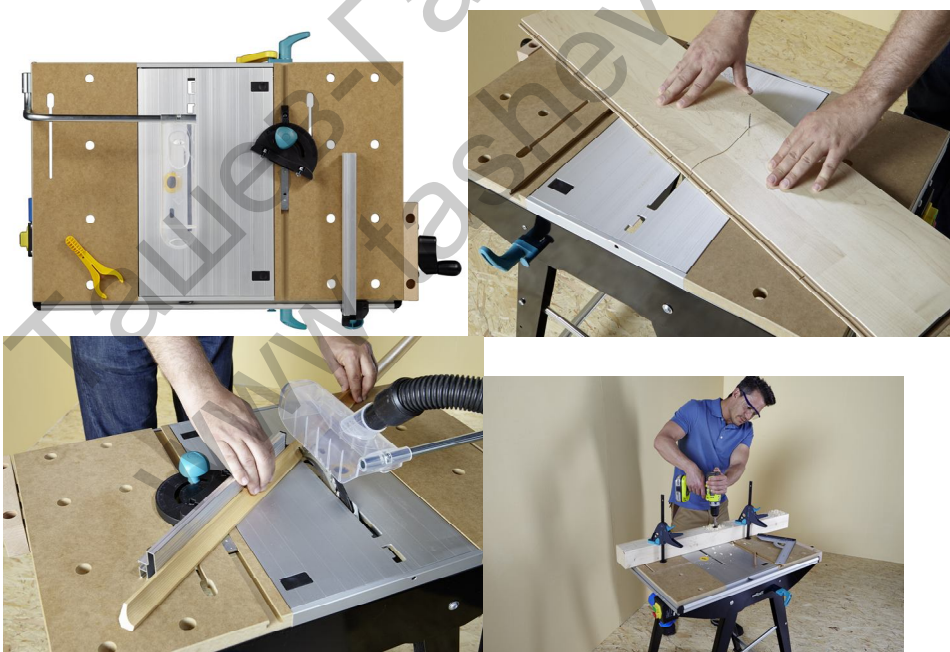


# MASTER cut 1500 - work and machine table





## Precision saw table and work station

- multifunctional for all projects
- can be used as a circular saw bench, jigsaw table, milling table in conjunction with milling guide No. 6901000 and work station
- high precision thanks to adjustable aluminium machine plate and easy machine mounting
- supporting frame with crossmembers for max. stability, mobile and space-saving thanks to quick folding system
- robust beechwood vice
- compatible with virtually all hand mounting of all commercially available circular hand saws, routers and jigsaws

### Technical data

working height	865 mm
max. span / with clamping jaws	120 / 620 mm
bench top	780 x 500 mm
max. loading	200 kg
work top:	MDF, die-cast aluminium
for circular hand saws	with riving knife, up to a maximum cutting depth of 70 mm, saw blade diameter: 200 mm; machine plate dimensions: see pictogram
for jigsaws	all
for routers	with max. 230 V, max. 1800 W, maximum machine plate diameter: 170 mm; maximum machine plate height: 20 mm; for maximum router diameters of 27 mm

## Technical data

cutting width max. 390 mm

angled cuts 0 - 180°

dimensions of MDF panel: 495 x 500 x 23 mm

dimensions of machine plate: 285 x 500 mm

By using riving knife accessory Art. No. 6903000 (up to 160 mm) or Art. No. 6904000 (160 - 200 mm), circular hand saws can also be used without a riving knife.

1 angle stop

1 parallel stop

1 safety switch

including: 1 push stick

1 switch clamp

1 safety shield

4 plastic jaws for securing the workpiece horizontally

2 15 and 25 mm insert rings for routers

dimensions mounted: 940 - 640 x 865 mm

dimensions folded: 640 x 1,145 x 195 mm

weight : 17 kg